

Courses 2021



Federation University acknowledges the Traditional Custodians of the lands and waters where our campuses, centres and field stations are located, and pay our respects to Elders past and present. We extend this respect to all Aboriginal and Torres Strait Islander and First Nations Peoples.

The Aboriginal Traditional Custodians of the lands and waters where our campuses, centres and field stations are located include:

- ★ Wimmera Wotjobaluk, Jaadwa, Jadawadjali, Wergaia, Jupagulk
- ★ Ballarat Wadawurrung
- ★ Berwick Bunurong Boon Wurrung and Wurundjeri
- ★ Gippsland Gunai Kurnai
- ★ Nanya Station Mutthi Mutthi and Barkindji
- ★ Brisbane Turrbal and Jagera





Federation TAFE	02
Our facilities	04
Things you need to know	05
Apprenticeships and Traineeships	06
Your next steps	07
Admission Pathways	08
Youth, English Language and Pathway Programs	09
Agriculture	10
Horticulture	12
Conservation and Land Management	14
Building and Construction	15
Engineering and Manufacturing	18
Automotive	20
Business	22
Professional Editing and Writing	23
Graphic Design and Media	24
Information Technology	25
Community and Children's Services	26
Health	28
Food	30
Hairdressing and Beauty	32



## Why choose Federation TAFE?

At Federation TAFE, we're known for our high-quality teaching and training courses. Everything we do is designed to help you get ahead in your career, or simply take that first step into post-secondary education.

For more than 150 years, our courses have been driven by research, taught by some of the most experienced people in the business, and have always responded to the changing needs of industry.





## Here's what you can expect with us

### **A future you can count on**

It's not just doctors, lawyers and accountants who are the big money-makers today. In fact, trades and traditional 'blue collar' careers have fast become lucrative options – with many out-earning some of the typical 'white collar' professions. By helping you become a master of your trade, you'll have access to reliable, exciting and well-paid opportunities at a level you may never have thought possible.

### **Teachers who've been in your shoes**

You'll be learning from some of the best in their field. Our teachers have come from across industry including the trades, early childhood and community services, disability and education support, information technology, design, business, beauty and health. They know what it is like starting out and how to get ahead.

### **Outstanding facilities**

Part of preparing you for work means providing you with state-of-the-art training facilities. Our SMB campus is home to the Building and Construction Training Centre which houses all of our construction trades. SMB is also equipped with an automotive workshop, fully operating commercial kitchens and a hairdressing and beauty salon.

Our Rural Science Skills Centre is known for its Agriculture, Horticulture and Conservation & Land Management courses, while our new Manufacturing Engineering Skills Centre is particularly recognised for its excellence.

### **Strong local connections**

Thanks to our experienced teachers and long history in the trade training business, we have some of the strongest industry and business relationships in Australia. It's why we have such a high placement rate of apprentices and graduates with local companies.

### **Courses designed around you**

We offer a range of quality TAFE vocational education and training courses, with a big focus on apprenticeship and skills training.

We're also home to Federation College, where we offer a range of VCAL and preparatory courses for those looking at different ways to complete their education.

Depending on your background, education level and interests, you'll graduate with a Certificate, Diploma or Advanced Diploma.

## Our facilities

Where futures  
are refined

From our innovative Manufacturing Engineering Skills Centre, to the purpose-built Building and Construction Training Centre, we can safely say our TAFE facilities are some of the best in Victoria.

### SMB Campus

#### Lydiard Street South, Ballarat

Located right in the heart of Ballarat's CBD, SMB campus is known for its historic 19th century buildings. But it's the impressive number of world-class TAFE training facilities where our reputation excels.

#### Building and Construction Training Centre

Designed to help our TAFE students meet the challenges of the workplace head on, the Centre is home to a range of weather-proof learning environments. We've focused on replicating on-the-job settings for all the major building and construction trades.

#### Manufacturing Engineering Skills Centre

This multi-million-dollar, state-of-the-art building is the newest addition to our TAFE facilities. It houses the latest in engineering technology and will continue to adapt to meet the needs of this ever-evolving sector.

#### Prospects Training Restaurant

Prospects Restaurant is home to two large commercial kitchens and operates as a fully functional restaurant staffed by our teachers and students – the perfect place to learn, hone and test out your culinary skills.

#### Bakery Centre

This purpose built, state-of-the-art bakery kitchen classroom is one of the newest additions to our TAFE facilities. It houses the latest in baking ovens and equipment and will be used to teach artisan bakery and bread making.

#### Unistyle Hair and Beauty

A commercial salon where our leading hairdressers and beauticians train students and develop their skills. To help you gain experience, we offer a range of discounted services to students, staff and the public.

#### Federation College

The SMB campus is home to Federation College, delivering a range of academic pathway programs to students.

### Rural Sciences Skills Centre

#### Gillies Street and Mt Rowan, Ballarat

Our Rural Sciences Skills Centre is spread across two locations. At our Gillies Street site, you can study Horticulture and Conservation and Land Management courses – where you'll gain fieldwork experience in the surrounding Ballarat Botanical Gardens and large wetlands area.

At our Mt Rowan site, you can study our Agriculture courses. You'll learn the business of farming, and how to use the kind of equipment and facilities you can expect to find in modern agricultural enterprises.

### Wimmera Campus

#### Baillie Street, Horsham

With its TAFE and degree study options, Wimmera appeals to all kinds of students from all kinds of backgrounds. Fully equipped to meet the needs of today's workplaces, the campus features a hairdressing salon, a nursing training centre as well as specialised plumbing, electrical, automotive and building & construction workshops.

### Camp Street Campus

#### Camp Street, Ballarat

Located right in the centre of Ballarat, Camp Street is known for its highly-regarded Arts Academy – running TAFE visual arts courses as well as higher education level visual and performing arts courses. With a mix of specialised theatres and galleries, the campus provides the kind of environment needed to hone your creativity, experiment and showcase your work.

### Mt Helen Campus

#### University Drive, Mt Helen (Ballarat)

Our flagship Ballarat campus is home to both TAFE and higher education courses. Set on 110 hectares of natural bushland, Mt Helen combines a beautiful location with cutting-edge teaching and research facilities and is just minutes from the centre of Ballarat.





## Things you need to know from apprenticeships to fees

### Pre-apprenticeships

A pre-apprenticeship is a smart way to learn about your chosen career. It also gives you an edge over other applicants by showing employers you have the skills and knowledge to hit the ground running.

Most courses will run for 14 to 18 weeks, and once completed can reduce the time it takes to complete your apprenticeship by up to six months.

### Apprenticeships and Traineeships

Before enrolling at Federation TAFE, apprentices and trainees need to be employed in their industry. This means you'll need a signed training agreement. You'll find most apprenticeships or traineeships are Certificate II or III level courses.

### Certificates, Diplomas and Advanced Diplomas

In this guide, you can read about all the Certificates, Diplomas and Advanced Diplomas we offer, as well as the entry requirements you'll need for each.

Remember, not all Certificates are apprenticeships or traineeships. And you can apply for many of our courses straight from school.

### Study modes

Most TAFE students will study on campus, or at one of our teaching locations. You can find out more at [federation.edu.au/studymodes](https://www.federation.edu.au/studymodes)

### Extra Requirements

Many industries need their workers to hold a Working With Children's Check (WWCC) and/or a Police Check before they start a placement or employment.

Check out [study.federation.edu.au](https://www.study.federation.edu.au) to find out if this applies to the industries/courses you are interested in.

### Let's talk about the fees

For most of us, they're simply part of the deal. But you'll find that fees vary between each course, and that we have a range of scholarships available to help you stay on track.

You can find out more at [federation.edu.au/scholarships](https://www.federation.edu.au/scholarships)

For more on TAFE fees, head to [federation.edu.au/studentfees](https://www.federation.edu.au/studentfees)

### How to apply

How you apply will depend on your circumstances – i.e. your age, history and citizenship status. You can either apply via VTAC, or directly to Federation TAFE.

You can find out more about VTAC at [vtac.edu.au](https://www.vtac.edu.au), and more about applying directly at [federation.edu.au/apply](https://www.federation.edu.au/apply)

### LLN Assessment

Before starting a TAFE course, you'll need to undertake a Language, literacy and numeracy assessment, Digital capability testing and a Pre-training review.

## Apprenticeships and traineeships

### The smart way to kickstart your career

An apprenticeship or traineeship is a state training contract between an employer and an employee. In other words, a fantastic way to learn the tools of the trade, earn a nationally-accredited qualification, and get your career off to a flying start – all while making a good wage.

For most occupations and trades, there's an apprenticeship or traineeship you can do. While you're an apprentice or trainee, you'll carry out training either in the workplace, or here with us – and you'll have the flexibility you need to make it all happen.

### The finer details

#### Apprenticeships

- An employer agrees to employ and train you until all competencies are achieved or for the term of the contract, if required.
- Apprenticeships usually take 3-4 years of full-time employment and training. A part time option may also be available.
- You'll be provided with instruction at your workplace and will also attend required off-the-job and/or workplace-based training (this will be outlined in your training plan).
- After the three-month probationary period is up, your training contract with your employer is legally binding. This means all parties must agree in order for the contract to be cancelled.
- If your employer sells their business, your training contract continues with the new business owners.

#### Traineeships

- An employer agrees to employ you for the term of your traineeship (usually 12-18 months of full-time employment and training. Part time may also be available).
- You agree to follow instruction and attend structured training.
- If your employer sells their business, the new owner isn't obligated to keep you on as a trainee.
- If you or your employer wishes to end your traineeship contract, mutual agreement isn't required.





## Your next steps

If an apprenticeship or traineeship sounds like something you'd love to do, then it's best to know how to go about it. Importantly, you must secure employment before any trade training can happen.

You may also be able to start a part-time apprenticeship or traineeship while still at school. In fact, there are a number of ways this can be managed, such as working in the industry two days a week and going to trade school the other three days.

## A few pointers

Getting an apprenticeship or traineeship is certainly achievable, but it won't happen unless you make a plan. Here are some tips.

- Have a good think about the areas you'd like to work in.  
What are you good at?  
What do you enjoy doing?  
What are you curious to learn?  
You'll find that most careers have apprenticeship and traineeship options.
- To get a taste for the industry, or an edge over other applicants, think about doing a pre-apprenticeship.
- Get your resume up to date and presentable.
- Put a face to your name by dropping off your resumes in person. Chat to your local Group Training Organisations, visit employment network providers, and check out local papers and employment websites.
- To get some experience, try volunteering your time.
- Keep at it – the more you want it, the better your chances will be.

### Need a hand?

For more information, give the Skills and Jobs Centre a call on 5327 6540.

## Define your next steps

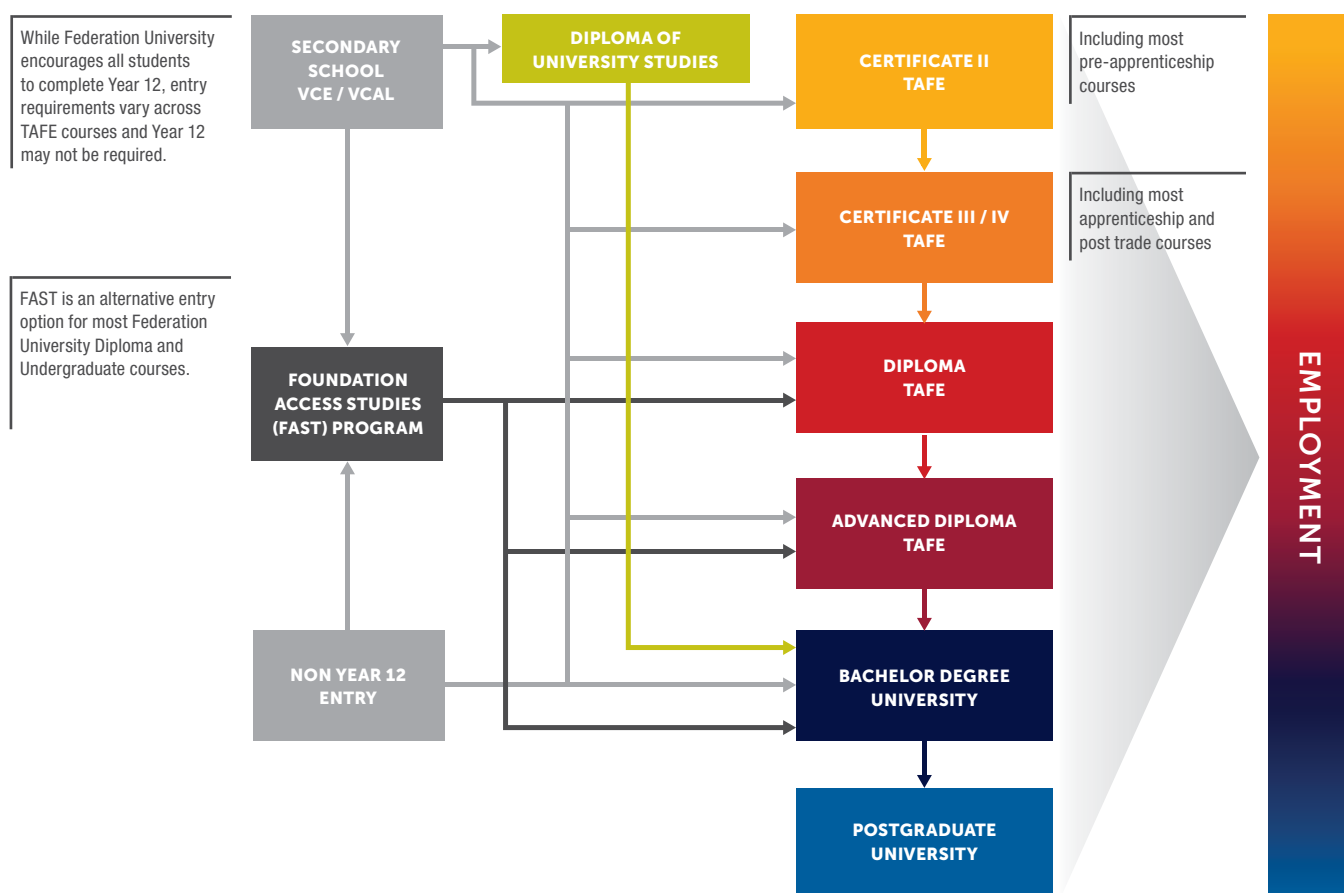
Federation TAFE can either be the beginning of your journey, a way to upskill in your career, or a gateway to further study – it's up to you. Check out our pathway diagram below to see how our courses fit together.

### Admission pathways

### Could you be eligible for credit?

Having completed a TAFE program, you may be eligible for credit into a degree within a similar field of study. For the most up-to-date credit arrangements please see:

[federation.edu.au/tafe-to-uni](http://federation.edu.au/tafe-to-uni)





# Youth, English language and pathway programs

Are you ready to pursue your goals?  
Improve your general education and prepare for future study with Federation College.

## GENERAL ENGLISH PROGRAM CERTIFICATE I/II IN EAL (ACCESS)

### LOCATION

SMB (Ballarat)

**NATIONAL COURSE CODE**  
22484VIC/22485VIC

**COURSE TYPE**  
S

**FREE TAFE**  
No

### DURATION

1 year full time or part time equivalent

### CONTACT HOURS PER WEEK

15

### ENTRY REQUIREMENTS

Must complete a Language, Literacy and Numeracy assessment and pre-training review. Ideal for newly arrived migrants, refugees and Australian citizens who wish to improve their English.

### OUTCOMES

The improved English skills gained from these programs (reading, writing speaking and listening) will assist in accessing further study, employment or community activities.

## ENDEAVOUR PROGRAM CERTIFICATE II IN GENERAL EDUCATION FOR ADULTS

### LOCATION

SMB (Ballarat)  
Wimmera (Horsham)

**NATIONAL COURSE CODE**  
22473VIC

**COURSE TYPE**  
S

**FREE TAFE**  
No

### DURATION

6 months

### CONTACT HOURS PER WEEK

17.5

### ENTRY REQUIREMENTS

Must complete a Language, Literacy and Numeracy assessment and pre-training review.

### OUTCOMES

This Certificate is the equivalent of Year 10 and meets the minimum education requirement for entry into the Australian Defence Force. Science stream available.

## VICTORIAN CERTIFICATE OF APPLIED LEARNING

VCAL enables 15-19 year olds (not achieved Year 11) to pursue higher level education and training pathways. There are three levels – Foundation; Intermediate, and Senior (both with VET pathways). Students enrol in the level that matches their ability. Foundation develops knowledge and employability skills, with an emphasis on literacy and numeracy. Intermediate/Senior VCAL is for those aiming to continue their training/study or to move straight into the workforce. A limited range of VET electives are available.

NOTE: VCAL Intermediate and Senior are recognised senior secondary qualifications.

### LOCATION

SMB (Ballarat)

**NATIONAL COURSE CODE**  
VCALFND001 (Foundation)  
VCALINT001 (Intermediate)  
VCALSEN001 (Senior)

**COURSE TYPE**  
S

### DURATION

1 - 2 years

### CONTACT HOURS PER WEEK

10-25

### ENTRY REQUIREMENTS

15 – 19 year olds who have not achieved Year 10 (for Foundation) or Year 11/12 (for Intermediate/Senior).

### OUTCOMES

VCAL will help students gain employment through Australian Apprenticeships and Traineeships, or progress to further study in TAFE certificates and diplomas, or apply for university pathways (particularly for Senior VCAL).

## P-TECH

The P-TECH program provides students with the skills and support required to successfully navigate the transition from school to work or university. Students will leave Federation College as skilled candidates for jobs or further education. Benefits include an industry mentor (locally with IBM); workplace experience, defined pathways to a higher qualification, innovative approaches to learning, links to employment and learning opportunities using multiple teaching methods and tools.

### MORE INFORMATION

[www.federation.edu.au/ptech](http://www.federation.edu.au/ptech)

## NEED MORE INFORMATION?

[Federation.edu.au/fedcollege](http://Federation.edu.au/fedcollege)

### COURSE TYPE KEY

<b>S</b>	Study (may include Full Time, Part Time, On-campus, Flexible delivery, Workshops, Block mode and Blended delivery)	<b>P</b>	Pre-apprenticeship
		<b>A</b>	Apprenticeship
		<b>T</b>	Traineeship
		<b>SC</b>	Short Course

Before starting a TAFE course, you'll need to undertake a Language, literacy and numeracy assessment, Digital capability testing and a Pre-training review.

Find out more about fees at [federation.edu.au/fees](http://federation.edu.au/fees).

If you're an eligible student enrolled in an approved VET Student Loans course, you may defer all or part of your tuition fees to a VET Student Loan (up to the maximum loan cap).

# Agriculture

## Feed your passion

With the world facing rising populations and growing demands for food, the agricultural sector has never been more important to our economy and livelihood.

As one of the top industries in the world, agriculture could be worth an extra \$250 billion to the Australian economy over the next 20 years. By 2050, it's expected that world food demand will go up by 70% – and that wealthy consumers will want more diversity.

For anyone looking for a career in farming, the future is certainly bright. Our courses and training options will prepare you to work in this evolving space – helping you make a successful and sustainable contribution to the way we eat and live.

### DIPLOMA OF AGRICULTURE

**LOCATION**

Mt Rowan (Ballarat)

**NATIONAL COURSE CODE**

AHC50116

**COURSE TYPE**

S

**FREE TAFE**

No

**DURATION**

2 years part-time

**CONTACT HOURS PER WEEK**

3.5 hours

**ENTRY REQUIREMENTS**

You'll need to do an interview.

**CAREER OPPORTUNITIES**

Farm manager; Farmer

### CERTIFICATE III IN AGRICULTURE

**LOCATION**

Mt Rowan (Ballarat)

**NATIONAL COURSE CODE**

AHC30116

**COURSE TYPE**

T or S

**FREE TAFE**

Yes

**DURATION**

On-campus - 1 year  
Traineeship - 2 years

**CONTACT HOURS PER WEEK**

On-campus - 12 hours  
Traineeship - 8 hours

**ENTRY REQUIREMENTS**

If you're a Traineeship student, you must be employed and signed as a trainee. There are no formal entry requirements for non-traineeship students.

**CAREER OPPORTUNITIES**

Farm tradesperson; Senior farm hand; Station hand

### CERTIFICATE II IN AGRICULTURE

**LOCATION**

Mt Rowan (Ballarat)

**NATIONAL COURSE CODE**

AHC20116

**COURSE TYPE**

S

**FREE TAFE**

Yes

**DURATION**

5 months

**CONTACT HOURS PER WEEK**

3 days

**ENTRY REQUIREMENTS**

There are no formal entry requirements.

**CAREER OPPORTUNITIES**

Assistant stockperson; Assistant farm hand; Assistant station hand

### CERTIFICATE IV IN AGRICULTURE

**LOCATION**

Mt Rowan (Ballarat)

**NATIONAL COURSE CODE**

AHC40116

**COURSE TYPE**

S

**FREE TAFE**

Yes

**DURATION**

2 years

**CONTACT HOURS PER WEEK**

1 day per fortnight

**ENTRY REQUIREMENTS**

There are no formal entry requirements.

**CAREER OPPORTUNITIES**

Farm team leader; Farm supervisor

Before starting a TAFE course, you'll need to undertake a Language, literacy and numeracy assessment, Digital capability testing and a Pre-training review.

Find out more about fees at [federation.edu.au/fees](https://www.federation.edu.au/fees).

If you're an eligible student enrolled in an approved VET Student Loans course, you may defer all or part of your tuition fees to a VET Student Loan (up to the maximum loan cap).





#### CERTIFICATE IV IN WOOL CLASSING

##### LOCATION

Mt Rowan (Ballarat)

##### NATIONAL COURSE CODE

AHC41316

##### COURSE TYPE

T or S

##### FREE TAFE

No

##### DURATION

1.5 years

##### CONTACT HOURS PER WEEK

3 hours per week

##### ENTRY REQUIREMENTS

You'll need a minimum two weeks (80 hours) wool shed experience, or similar.

##### CAREER OPPORTUNITIES

Woolclasser

#### NEED MORE INFORMATION?

[Federation.edu.au/agriculture](http://Federation.edu.au/agriculture)

#### AGRICULTURE SHORT COURSES

	NATIONAL COURSE CODE	LOCATION	DURATION	FREE TAFE
Chemical Users Course	AHC30116	Gillies Street (Ballarat)	3 days	No
Conduct front-end Loader Operations	AHC30116	Mt Rowan (Ballarat)	2 days	No
Operate Quad Bikes	AHC30116	Mt Rowan (Ballarat)	2 days	No
Operate Tractors	AHC30116	Mt Rowan (Ballarat)	2 days	No
Operate and Maintain Chainsaws	AHC30116	Gillies Street (Ballarat)	2 days	No

#### COURSE TYPE KEY

<b>S</b>	Study (may include Full Time, Part Time, On-campus, Flexible delivery, Workshops, Block mode and Blended delivery)	<b>P</b>	Pre-apprenticeship
		<b>A</b>	Apprenticeship
		<b>T</b>	Traineeship
		<b>SC</b>	Short Course

# Horticulture

## Grow a brighter future

Being located within an important horticultural region in Victoria, we're passionate about helping our students not only ensure a bright future for themselves, but also for the world we live in.

Horticulture is one of Australia's fastest-growing industries, closely linked to urban development and lifestyle. From maintaining parks and gardens, to working in plant nurseries and on landscaping projects – our courses will turn your passion for the outdoors into a career you can be proud of.

### CERTIFICATE II IN HORTICULTURE

**LOCATION**

Gillies Street (Ballarat)

**NATIONAL COURSE CODE**  
AHC20416

**COURSE TYPE**  
T or S

**FREE TAFE**  
Yes

**DURATION**  
1 year

**CONTACT HOURS PER WEEK**  
3 days

**ENTRY REQUIREMENTS**

There are no formal entry requirements.

**CAREER OPPORTUNITIES**

Nursery assistant; Gardening labourer; Landscape assistant

### CERTIFICATE II IN LANDSCAPING

**LOCATION**

Gillies Street (Ballarat)

**NATIONAL COURSE CODE**  
AHC21616

**COURSE TYPE**  
P

**FREE TAFE**  
No

**DURATION**  
16 weeks

**CONTACT HOURS PER WEEK**  
3 days

**ENTRY REQUIREMENTS**

There are no formal entry requirements.

**CAREER OPPORTUNITIES**

Landscape construction apprentice; Labourer

### NEED MORE INFORMATION?

[Federation.edu.au/horticulture](http://Federation.edu.au/horticulture)

### CERTIFICATE III IN HORTICULTURE

**LOCATION**

Gillies Street (Ballarat), Wimmera (Horsham)

**NATIONAL COURSE CODE**  
AHC30716

**COURSE TYPE**  
T or S

**FREE TAFE**  
Yes

**DURATION**

On-campus – 1 year  
Trainees – 2 years

**CONTACT HOURS PER WEEK**

On-campus – 18 hours  
Trainees – 6 hours

**ENTRY REQUIREMENTS**

If you're a Traineeship student, you must be employed and signed as a trainee. There are no formal entry requirements for non-traineeship students.

**CAREER OPPORTUNITIES**

Gardener; Horticulturist

### CERTIFICATE III IN LANDSCAPE CONSTRUCTION

**LOCATION**

Gillies Street (Ballarat)

**NATIONAL COURSE CODE**  
AHC30916

**COURSE TYPE**  
A

**FREE TAFE**  
No

**DURATION**  
4 years

**CONTACT HOURS PER WEEK**  
6 hours

**ENTRY REQUIREMENTS**

You'll need to be employed as an apprentice with a signed agreement.

**CAREER OPPORTUNITIES**

Landscaper; Landscaping gardener

Before starting a TAFE course, you'll need to undertake a Language, literacy and numeracy assessment, Digital capability testing and a Pre-training review.

Find out more about fees at [federation.edu.au/fees](http://federation.edu.au/fees).

If you're an eligible student enrolled in an approved VET Student Loans course, you may defer all or part of your tuition fees to a VET Student Loan (up to the maximum loan cap).





### CERTIFICATE IV IN HORTICULTURE

#### LOCATION

Gillies Street (Ballarat)

NATIONAL COURSE CODE	COURSE TYPE	FREE TAFE
AHC40416	T or S	No

DURATION	CONTACT HOURS PER WEEK
2 years part-time	6 hours

#### ENTRY REQUIREMENTS

You'll need relevant trade qualification or industry experience.

#### CAREER OPPORTUNITIES

Horticulturist; Retail nursery manager

### DIPLOMA OF HORTICULTURE

#### LOCATION

Gillies Street (Ballarat)

NATIONAL COURSE CODE	COURSE TYPE	FREE TAFE
AHC50416	S	No

DURATION	CONTACT HOURS PER WEEK
1 year	24 hours (over 3 days)

#### ENTRY REQUIREMENTS

There are no formal entry requirements.

#### CAREER OPPORTUNITIES

Site manager; Small business owner; Nursery manager; Garden manager; Landscape production manager; Horticultural production consultant; Landscape designer

### CERTIFICATE III IN PARKS AND GARDENS

#### LOCATION

Gillies Street (Ballarat)

NATIONAL COURSE CODE	COURSE TYPE	FREE TAFE
AHC31016	A	No

DURATION	CONTACT HOURS PER WEEK
3 years	6 hours

#### ENTRY REQUIREMENTS

You'll need to be employed as an apprentice with a signed agreement.

#### CAREER OPPORTUNITIES

Gardener; Horticulturist

#### COURSE TYPE KEY

<b>S</b>	Study (may include Full Time, Part Time, On-campus, Flexible delivery, Workshops, Block mode and Blended delivery)	<b>P</b>	Pre-apprenticeship
		<b>A</b>	Apprenticeship
		<b>T</b>	Traineeship
		<b>SC</b>	Short Course

# Conservation and Land Management

## Shape the way we live

As humans, we're shaped by the land. The healthier it is, the healthier we are.

In a world of increasing environmental challenges, good conservation and land management is undeniably important. It helps create purer water, cleaner air, richer wildlife and better protection against natural disasters.

Varied, challenging and naturally fulfilling – a career in this field will give you the opportunity to make a genuine impact.

Keep in mind that our Diploma of Conservation and Land Management offers a pathway with credit into one of our degree courses.

### NEED MORE INFORMATION?

[Federation.edu.au/ruralscience](https://www.federation.edu.au/ruralscience)

#### DIPLOMA OF CONSERVATION AND LAND MANAGEMENT

##### LOCATION

Gillies Street (Ballarat)

**NATIONAL COURSE CODE**  
AHC51116

**COURSE TYPE**  
S

**FREE TAFE**  
No

**DURATION**  
1 year

**CONTACT HOURS PER WEEK**  
18 hours (over 3 days)

##### ENTRY REQUIREMENTS

There are no formal entry requirements.

##### CAREER OPPORTUNITIES

Land management supervisor; Wildlife manager; Park ranger

#### CERTIFICATE III IN CONSERVATION AND LAND MANAGEMENT

##### LOCATION

Gillies Street (Ballarat)

**NATIONAL COURSE CODE**  
AHC31416

**COURSE TYPE**  
T or S

**FREE TAFE**  
No

**DURATION**  
On campus – 1 year  
Trainees – 2 years

**CONTACT HOURS PER WEEK**  
18 hours (over 3 days)

##### ENTRY REQUIREMENTS

If you're a Traineeship student, you must be employed and signed as a trainee. There are no formal entry requirements for non-traineeship students.

##### CAREER OPPORTUNITIES

Community field officer; Field operator; Project officer; Vertebrate pest officer; Weeds operator; Wildlife and parks field officer.

Before starting a TAFE course, you'll need to undertake a Language, literacy and numeracy assessment, Digital capability testing and a Pre-training review.

Find out more about fees at [federation.edu.au/fees](https://www.federation.edu.au/fees).

If you're an eligible student enrolled in an approved VET Student Loans course, you may defer all or part of your tuition fees to a VET Student Loan (up to the maximum loan cap).

## Building and Construction

### The right tools to get ahead

Few industries are as crucial to our local and national economy as building and construction. Not surprisingly, there are plenty of opportunities to carve out a career across a number of trades, joining the millions of men and women already making their mark.

But you need the right qualifications before you start. And in our cutting-edge Building and Construction Training Centre, we offer a range of courses and training options – all of which give you the tools needed to tackle an ever-changing industry.

Our staff are some of the best at what they do, and maintain strong relationships within the industry to keep up with the latest trends in innovation and development.

#### ADVANCED DIPLOMA OF BUILDING DESIGN (ARCHITECTURAL)

<b>LOCATION</b> SMB (Ballarat)	<b>DURATION</b> 2.5 years	<b>CONTACT HOURS PER WEEK</b> 4 days
<b>NATIONAL COURSE CODE</b> 22477VIC	<b>COURSE TYPE</b> S	<b>FREE TAFE</b> No

##### ENTRY REQUIREMENTS

Selection is based on a range of criteria.

##### CAREER OPPORTUNITIES

Building designer; Commercial kitchen designer; Documentation technician

#### ADVANCED DIPLOMA OF BUILDING SURVEYING

<b>LOCATION</b> SMB (Ballarat)	<b>DURATION</b> 2 years	<b>CONTACT HOURS PER WEEK</b> 1 evening & 1 day
<b>NATIONAL COURSE CODE</b> CPC60115	<b>COURSE TYPE</b> S	<b>FREE TAFE</b> Yes

##### ENTRY REQUIREMENTS

Year 12 recommended with work/life experience within the industry.

##### CAREER OPPORTUNITIES

Building surveyor; Building certifier

#### DIPLOMA OF BUILDING AND CONSTRUCTION (BUILDING)

<b>LOCATION</b> SMB (Ballarat)	<b>NATIONAL COURSE CODE</b> CPC50210	<b>COURSE TYPE</b> S	<b>FREE TAFE</b> Yes
-----------------------------------	---	-------------------------	-------------------------

##### DURATION

1 year

##### CONTACT HOURS PER WEEK

1 day & 1 evening on campus  
and 1 evening online

##### ENTRY REQUIREMENTS

It's recommended you have 8 years Building and Construction industry experience, including 4 years as an apprentice.

##### CAREER OPPORTUNITIES

Site manager; Builder; Construction project manager; Foreman/supervisor; Estimator

#### CERTIFICATE II IN BUILDING AND CONSTRUCTION PRE-APPRENTICESHIP

<b>LOCATION</b> SMB (Ballarat)	<b>DURATION</b> 14 to 16 weeks*	<b>CONTACT HOURS PER WEEK</b> 3 or 4 days*
<b>NATIONAL COURSE CODE</b> 22338VIC	<b>COURSE TYPE</b> P	<b>FREE TAFE</b> Yes

##### ENTRY REQUIREMENTS

You'll need to be at least 16 years of age, or have completed Year 10 or equivalent.

##### CAREER OPPORTUNITIES

Apprentice bricklayer; Apprentice carpenter; Apprentice painter and decorator

\*depending on stream

#### NEED MORE INFORMATION?

[Federation.edu.au/buildingandconstruction](http://Federation.edu.au/buildingandconstruction)

##### COURSE TYPE KEY

<b>S</b>	Study (may include Full Time, Part Time, On-campus, Flexible delivery, Workshops, Block mode and Blended delivery)
----------	--

<b>P</b>	Pre-apprenticeship
<b>A</b>	Apprenticeship

<b>T</b>	Traineeship
<b>SC</b>	Short Course



# Building and Construction

## CERTIFICATE II IN CONSTRUCTION PATHWAYS

<b>LOCATION</b> SMB (Ballarat)	<b>DURATION</b> 16 weeks	<b>CONTACT HOURS PER WEEK</b> On average 3 or 4 days
<b>NATIONAL COURSE CODE</b> CPC20211	<b>COURSE TYPE</b> P	<b>FREE TAFE</b> Yes
<b>ENTRY REQUIREMENTS</b> You'll need to be at least 16 years of age, or have completed Year 10 or equivalent.		
<b>CAREER OPPORTUNITIES</b> Joiner; Apprentice joiner; Apprentice carpenter		

## CERTIFICATE II IN ELECTROTECHNOLOGY (CAREER START)

<b>LOCATION</b> SMB (Ballarat) Wimmera (Horsham)	<b>DURATION</b> 16 or 23 weeks*	<b>CONTACT HOURS PER WEEK</b> 2 or 3 days*
<b>NATIONAL COURSE CODE</b> UEE22011	<b>COURSE TYPE</b> P	<b>FREE TAFE</b> Yes
<b>ENTRY REQUIREMENTS</b> You'll need to be at least 16 years of age, or have completed Year 10 or equivalent.		
<b>CAREER OPPORTUNITIES</b> Apprentice electrician		
*depending on group		

## CERTIFICATE II IN FURNITURE MAKING

<b>LOCATION</b> SMB (Ballarat)	<b>DURATION</b> 10 weeks	<b>CONTACT HOURS PER WEEK</b> 4 days
<b>NATIONAL COURSE CODE</b> MSF20313	<b>COURSE TYPE</b> P	<b>FREE TAFE</b> Yes
<b>ENTRY REQUIREMENTS</b> You'll need to be at least 16 years of age, or have completed Year 10 or equivalent.		<b>CAREER OPPORTUNITIES</b> Apprentice furniture maker

## CERTIFICATE II IN PLUMBING (PRE-APPRENTICESHIP)

<b>LOCATION</b> SMB (Ballarat)	<b>DURATION</b> 26 weeks	<b>CONTACT HOURS PER WEEK</b> 2 days
<b>NATIONAL COURSE CODE</b> 22304VIC	<b>COURSE TYPE</b> P	<b>FREE TAFE</b> Yes
<b>ENTRY REQUIREMENTS</b> You'll need to be at least 16 years of age, or have completed Year 10 or equivalent.		<b>CAREER OPPORTUNITIES</b> Apprentice plumber

## CERTIFICATE III IN BRICKLAYING/BLOCKLAYING

<b>LOCATION</b> SMB (Ballarat)	<b>DURATION</b> 3 years	<b>CONTACT HOURS PER WEEK</b> 3 days during on-campus blocks
<b>NATIONAL COURSE CODE</b> CPC30111	<b>COURSE TYPE</b> A	<b>FREE TAFE</b> No
<b>ENTRY REQUIREMENTS</b> You'll need to be employed as an apprentice with a signed agreement.		
<b>CAREER OPPORTUNITIES</b> Bricklayer; Qualified tradesperson; Building contractor; Site supervisor; Business owner; Subcontractor		

## CERTIFICATE III IN CABINET MAKING

<b>LOCATION</b> SMB (Ballarat)	<b>DURATION</b> 4 years	<b>CONTACT HOURS PER WEEK</b> 5 days during on-campus blocks
<b>NATIONAL COURSE CODE</b> MSF31113	<b>COURSE TYPE</b> A	<b>FREE TAFE</b> No
<b>ENTRY REQUIREMENTS</b> You'll need to be employed as an apprentice with a signed agreement		
<b>CAREER OPPORTUNITIES</b> Cabinet maker		

## CERTIFICATE III IN CARPENTRY

<b>LOCATION</b> SMB (Ballarat)	<b>DURATION</b> 4 years	<b>CONTACT HOURS PER WEEK</b> 3 days during on-campus blocks
<b>NATIONAL COURSE CODE</b> CPC30211	<b>COURSE TYPE</b> A	<b>FREE TAFE</b> No
<b>ENTRY REQUIREMENTS</b> You'll need to be employed as an apprentice with a signed agreement		
<b>CAREER OPPORTUNITIES</b> Qualified tradesperson; Site supervisor; Subcontractor		

## CERTIFICATE III IN ELECTROTECHNOLOGY ELECTRICIAN

<b>LOCATION</b> SMB (Ballarat) Wimmera (Horsham)	<b>DURATION</b> 4 years	<b>CONTACT HOURS PER WEEK</b> 5 days during on-campus blocks
<b>NATIONAL COURSE CODE</b> UEE30811	<b>COURSE TYPE</b> A	<b>FREE TAFE</b> No
<b>ENTRY REQUIREMENTS</b> You'll need to be employed as an apprentice with a signed agreement		
<b>CAREER OPPORTUNITIES</b> Electrician		

### COURSE TYPE KEY

<b>S</b>	Study (may include Full Time, Part Time, On-campus, Flexible delivery, Workshops, Block mode and Blended delivery)	<b>P</b>	Pre-apprenticeship	<b>T</b>	Traineeship
		<b>A</b>	Apprenticeship	<b>SC</b>	Short Course



### CERTIFICATE III IN JOINERY

<b>LOCATION</b> SMB (Ballarat)	<b>DURATION</b> 4 years	<b>CONTACT HOURS PER WEEK</b> 5 days during on-campus blocks
<b>NATIONAL COURSE CODE</b> CPC31912	<b>COURSE TYPE</b> A	<b>FREE TAFE</b> No

#### ENTRY REQUIREMENTS

You'll need to be employed as an apprentice with a signed agreement

#### CAREER OPPORTUNITIES

Joiner

### CERTIFICATE III IN PLUMBING

<b>LOCATION</b> SMB (Ballarat)	<b>DURATION</b> 3 years	<b>CONTACT HOURS PER WEEK</b> 5 days during on-campus blocks
<b>NATIONAL COURSE CODE</b> CPC32413	<b>COURSE TYPE</b> A	<b>FREE TAFE</b> No

#### ENTRY REQUIREMENTS

You'll need to be employed as an apprentice with a signed agreement

#### CAREER OPPORTUNITIES

Gasfitter; Plumber; Plumber and drainer; Plumber and gasfitter; Roof plumber

### CERTIFICATE III IN PAINTING AND DECORATING

<b>LOCATION</b> SMB (Ballarat)	<b>DURATION</b> 4 years	<b>CONTACT HOURS PER WEEK</b> 3 days during on-campus blocks
<b>NATIONAL COURSE CODE</b> CPC30611	<b>COURSE TYPE</b> A	<b>FREE TAFE</b> No

#### ENTRY REQUIREMENTS

You'll need to be employed as an apprentice with a signed agreement

#### CAREER OPPORTUNITIES

Building contractor; Painter; Site supervisor; Business owner; Painter and decorator; Subcontractor; Interior decorator; Qualified tradesperson

### CERTIFICATE IV IN BUILDING AND CONSTRUCTION (BUILDING)

<b>LOCATION</b> SMB (Ballarat)	<b>DURATION</b> 1 year	<b>CONTACT HOURS PER WEEK</b> 1 evening on-campus and 1 evening online
<b>NATIONAL COURSE CODE</b> CPC40110	<b>COURSE TYPE</b> S	<b>FREE TAFE</b> Yes

#### ENTRY REQUIREMENTS

There are no prerequisites for this course, however it's strongly recommended that you have at least 3 years of work experience in the building and construction industry

#### CAREER OPPORTUNITIES

Building practitioner; Construction manager; Foreman; Foreperson; Licenced builder; Site manager

### BUILDING AND CONSTRUCTION SHORT COURSES

	<b>NATIONAL COURSE CODE</b>	<b>LOCATION</b>	<b>DURATION</b>	<b>FREE TAFE</b>
Licence to erect, alter and dismantle scaffolding basic level	CPCCLSF200	SMB (Ballarat)	5 days	No
Prepare to work safely in the construction industry	CPCCWHS1001	SMB (Ballarat)	1 day	No

### NEED MORE INFORMATION?

[Federation.edu.au/buildingandconstruction](https://www.federation.edu.au/buildingandconstruction)

Before starting a TAFE course, you'll need to undertake a Language, literacy and numeracy assessment, Digital capability testing and a Pre-training review.

Find out more about fees at [federation.edu.au/fees](https://www.federation.edu.au/fees).

If you're an eligible student enrolled in an approved VET Student Loans course, you may defer all or part of your tuition fees to a VET Student Loan (up to the maximum loan cap).

# Engineering and Manufacturing

## Build your career (and our future)

From mechanical and electrical, to mechatronics and automotive, the engineering and manufacturing industry is one the most diverse in the world.

The good thing is, it's always progressing. And for people with the right skills and qualifications, there are countless opportunities to either get your career started or get to that next level.

Our courses suit people at different stages in their career – from Certificate II level (pre-apprenticeship) all the way to Diplomas.

### DIPLOMA OF ENGINEERING – TECHNICAL

#### LOCATION

SMB (Ballarat)

NATIONAL COURSE CODE	COURSE TYPE	FREE TAFE
MEM50212	S	No

DURATION	CONTACT HOURS PER WEEK
1 year	2 days and 1 evening

#### ENTRY REQUIREMENTS

Y12 recommended: Year 12 mathematics unit (any) and be proficient in basic algebra and trigonometry  
NY12: Certificate III in Engineering or Industrial training/experience

#### CAREER OPPORTUNITIES

CAD drafter; Engineering technical officer; Control systems engineer; Engineering estimator; Mechanical engineer; Engineering project officer; Paraprofessional engineer; Automation technician; Materials technician; Technician

### CERTIFICATE III IN ENGINEERING – FABRICATION TRADE

#### LOCATION

SMB (Ballarat)

NATIONAL COURSE CODE	COURSE TYPE	FREE TAFE
MEM30319	A	No

DURATION	CONTACT HOURS PER WEEK
3 years	3 days during on-campus blocks

#### ENTRY REQUIREMENTS

You'll need to be employed as an apprentice with a signed agreement

#### CAREER OPPORTUNITIES

Boiler maker; Fabricator; Sheetmetal worker; Welder

### CERTIFICATE II IN ENGINEERING STUDIES

#### LOCATION

SMB (Ballarat)

NATIONAL COURSE CODE	COURSE TYPE	FREE TAFE
22470VIC	P	Yes

DURATION	CONTACT HOURS PER WEEK
16 weeks	3 days

#### ENTRY REQUIREMENTS

Language, literacy and numeracy evaluation to year 10 standard;  
Basic computer skills

#### CAREER OPPORTUNITIES

Boiler maker; Manufacturing engineer; Mechanical engineer; Automotive engineer; Boilermaker; Electrical engineer/Electrician; Fitter and Turner; Metallurgical engineer

### CERTIFICATE III IN ENGINEERING – MECHANICAL TRADE

#### LOCATION

SMB (Ballarat)

NATIONAL COURSE CODE	COURSE TYPE	FREE TAFE
MEM30219	A	No

DURATION	CONTACT HOURS PER WEEK
3 years	3 days during on-campus blocks

#### ENTRY REQUIREMENTS

You'll need to be employed as an apprentice with a signed agreement

#### CAREER OPPORTUNITIES

CNC machinist; Fitter; Maintenance fitter; Mechatronics tradesperson; Machinist 1st class

#### COURSE TYPE KEY

<b>S</b>	Study (may include Full Time, Part Time, On-campus, Flexible delivery, Workshops, Block mode and Blended delivery)	<b>P</b>	Pre-apprenticeship	<b>T</b>	Traineeship
		<b>A</b>	Apprenticeship	<b>SC</b>	Short Course





#### CERTIFICATE IV IN ENGINEERING

##### LOCATION

SMB (Ballarat)

NATIONAL COURSE CODE	COURSE TYPE	FREE TAFE
MEM40119	S	Yes
DURATION	CONTACT HOURS PER WEEK	
1 year	1 day	

##### ENTRY REQUIREMENTS

You'll need a Certificate III qualification in the metals and engineering area

##### CAREER OPPORTUNITIES

CAD drafter; NC/CNC machining/plasma profiling; Specialised welder  
CNC machinist; Maintenance in hydraulics and pneumatics; Specialised welding and welding supervision; Maintenance supervisor; NC machinist; Specialised maintenance and supervision; Hydraulics and pneumatics technician

#### CERTIFICATE IV IN ENGINEERING DRAFTING

##### LOCATION

SMB (Ballarat)

NATIONAL COURSE CODE	COURSE TYPE	FREE TAFE
MEM40412	S	No
DURATION	CONTACT HOURS PER WEEK	
1 year	Average 18 hours	

##### ENTRY REQUIREMENTS

There are no formal entry requirements.

##### CAREER OPPORTUNITIES

Mechanical engineering draftsman; Technician; Civil draftsman

#### ENGINEERING SHORT COURSES

	NATIONAL COURSE CODE	LOCATION	DURATION	FREE TAFE
Course in Hydraulics, Pneumatics and Fluid Power	MEM40105/MEM50212	SMB (Ballarat)	17 weeks	No
Machining for Enthusiasts, Hobbyists and Beginners	22470VIC	SMB (Ballarat)	1 year	No
Machining for existing Metal Workers	MEM401058	SMB (Ballarat)	1 year	No
Global Wind Organisation Standard	N/A	SMB (Ballarat)	1 week	No

#### NEED MORE INFORMATION?

[Federation.edu.au/eng](http://Federation.edu.au/eng)

Before starting a TAFE course, you'll need to undertake a Language, literacy and numeracy assessment, Digital capability testing and a Pre-training review.

Find out more about fees at [federation.edu.au/fees](http://federation.edu.au/fees).

If you're an eligible student enrolled in an approved VET Student Loans course, you may defer all or part of your tuition fees to a VET Student Loan (up to the maximum loan cap).

## Automotive

### Find your drive

It's one of the largest and most innovative industries in the world. And with the right qualifications under your belt, you can work just about anywhere you want.

At Federation TAFE, we offer automotive skills training at pre-apprenticeship, trade and post-trade levels. You'll take your love of engines and tinkering under the bonnet to a new level – gaining the skills needed to diagnose, repair and maintain the technologically advanced vehicles we drive today.

You'll be learning from experts in the field, who all work closely with industry to make sure you're getting the relevant education you need to get ahead.

#### CERTIFICATE II IN AUTOMOTIVE AIR CONDITIONING TECHNOLOGY

**LOCATION**  
SMB (Ballarat)

<b>NATIONAL COURSE CODE</b> AUR20218	<b>COURSE TYPE</b> S	<b>FREE TAFE</b> Yes
<b>DURATION</b> 22 weeks	<b>CONTACT HOURS PER WEEK</b> 2 days	

##### ENTRY REQUIREMENTS

There are no formal entry requirements.

##### CAREER OPPORTUNITIES

Automotive Service Technician (general); Automotive Service Technician (air-conditioning)

#### CERTIFICATE II IN AUTOMOTIVE SERVICING TECHNOLOGY

**LOCATION**  
SMB (Ballarat)

<b>NATIONAL COURSE CODE</b> AUR20516	<b>COURSE TYPE</b> T	<b>FREE TAFE</b> Yes
<b>DURATION</b> 2 years	<b>CONTACT HOURS PER WEEK</b> 8.30am to 4.30pm x 28 – day release classes	

##### ENTRY REQUIREMENTS

You'll need to be employed as an apprentice with a signed agreement.

##### CAREER OPPORTUNITIES

Automotive serviceperson

#### CERTIFICATE II IN AUTOMOTIVE VOCATIONAL PREPARATION

**LOCATION**  
SMB (Ballarat)

<b>NATIONAL COURSE CODE</b> AUR20716	<b>COURSE TYPE</b> P	<b>FREE TAFE</b> Yes
<b>DURATION</b> 20 weeks	<b>CONTACT HOURS PER WEEK</b> 3 days	

##### ENTRY REQUIREMENTS

There are no formal entry requirements.

##### CAREER OPPORTUNITIES

Automotive apprentice

#### CERTIFICATE III IN LIGHT VEHICLE MECHANICAL TECHNOLOGY

**LOCATION**  
SMB (Ballarat), Wimmera (Horsham)

<b>NATIONAL COURSE CODE</b> AUR30616	<b>COURSE TYPE</b> A	<b>FREE TAFE</b> No
<b>DURATION</b> 3 years	<b>CONTACT HOURS PER WEEK</b> 3 or 4 days x 9 or 10 blocks, depending on location	

##### ENTRY REQUIREMENTS

You'll need to be employed as an apprentice with a signed agreement.

##### CAREER OPPORTUNITIES

Automotive sales/retail; Business owner; Motor mechanic

##### COURSE TYPE KEY

<b>S</b>	Study (may include Full Time, Part Time, On-campus, Flexible delivery, Workshops, Block mode and Blended delivery)	<b>P</b>	Pre-apprenticeship
		<b>A</b>	Apprenticeship
		<b>T</b>	Traineeship
		<b>SC</b>	Short Course



AUTOMOTIVE SHORT COURSES	NATIONAL COURSE CODE	LOCATION	DURATION	FREE TAFE
Licensed Vehicle Tester (LVT) Program	N/A	SMB (Ballarat), Chadstone	4 days plus assessment	No
Licensed Vehicle (Motorcycle) Refresher Program	N/A	Various city and regional locations	1 day	No

**NEED MORE INFORMATION?**  
[Federation.edu.au/auto](https://www.federation.edu.au/auto)

Before starting a TAFE course, you'll need to undertake a Language, literacy and numeracy assessment, Digital capability testing and a Pre-training review.

Find out more about fees at [federation.edu.au/fees](https://www.federation.edu.au/fees).  
 If you're an eligible student enrolled in an approved VET Student Loans course, you may defer all or part of your tuition fees to a VET Student Loan (up to the maximum loan cap).



# Business

## Enhance your career

The business world is constantly changing, becoming more innovative, sustainable and globalised. If companies and organisations want any chance of forging ahead in this landscape, they need people with the right skills and mindset to help them do it.

At Federation TAFE, we focus on providing industry-relevant courses with a contemporary curriculum. We'll help you become the kind of professional that businesses need today – with the confidence to enhance your career, or even springboard to the next one.

### ADVANCED DIPLOMA OF LEADERSHIP AND MANAGEMENT

<b>LOCATION</b> Mt Helen (Ballarat), Wimmera (Horsham)		
<b>NATIONAL COURSE CODE</b> BSB61015	<b>COURSE TYPE</b> S	<b>FREE TAFE</b> No
<b>DURATION</b> 1 year	<b>CONTACT HOURS PER WEEK</b> 1 day	
<b>ENTRY REQUIREMENTS</b> Work/life/study experience		
<b>CAREER OPPORTUNITIES</b> Area manager; Regional manager; Department manager; General manager; Recruitment manager		

### ADVANCED DIPLOMA OF MANAGEMENT (HUMAN RESOURCES)

<b>LOCATION</b> Mt Helen (Ballarat), Wimmera (Horsham)		
<b>NATIONAL COURSE CODE</b> BSB60915	<b>COURSE TYPE</b> S	<b>FREE TAFE</b> No
<b>DURATION</b> 1 year	<b>CONTACT HOURS PER WEEK</b> 1 day per fortnight	
<b>ENTRY REQUIREMENTS</b> Work/life/study experience		
<b>CAREER OPPORTUNITIES</b> Business manager; Human resources manager; Department manager; Human resource strategist; Human resources director; Senior manager; Recruitment manager		

#### COURSE TYPE KEY

<b>S</b>	Study (may include Full Time, Part Time, On-campus, Flexible delivery, Workshops, Block mode and Blended delivery)	<b>P</b>	Pre-apprenticeship
		<b>A</b>	Apprenticeship
		<b>T</b>	Traineeship
		<b>SC</b>	Short Course

### DIPLOMA OF BUSINESS

<b>LOCATION</b> Mt Helen (Ballarat)		
<b>NATIONAL COURSE CODE</b> BSB50215	<b>COURSE TYPE</b> S	<b>FREE TAFE</b> No
<b>DURATION</b> 1 year	<b>CONTACT HOURS PER WEEK</b> 1 evening	
<b>ENTRY REQUIREMENTS</b> Work/life/study experience		
<b>CAREER OPPORTUNITIES</b> Program coordinator; Business manager; Department manager; Small business owner		

### DIPLOMA OF BUSINESS ADMINISTRATION

<b>LOCATION</b> Mt Helen (Ballarat)		
<b>NATIONAL COURSE CODE</b> BSB50415	<b>COURSE TYPE</b> S	<b>FREE TAFE</b> No
<b>DURATION</b> 1 year	<b>CONTACT HOURS PER WEEK</b> 1 evening	
<b>ENTRY REQUIREMENTS</b> Work/life/study experience		
<b>CAREER OPPORTUNITIES</b> Accounts supervisor; Administration officer; Executive personal assistant; Office administrator; Project assistant; General management; Office manager		

### DIPLOMA OF PROJECT MANAGEMENT

<b>LOCATION</b> Mt Helen (Ballarat)		
<b>NATIONAL COURSE CODE</b> BSB51415	<b>COURSE TYPE</b> S	<b>FREE TAFE</b> No
<b>DURATION</b> 1 year	<b>CONTACT HOURS PER WEEK</b> 1 evening	
<b>ENTRY REQUIREMENTS</b> Work/life/study experience		
<b>CAREER OPPORTUNITIES</b> Project manager; Project officer		



### CERTIFICATE III IN BUSINESS

#### LOCATION

Mt Helen (Ballarat)

**NATIONAL COURSE CODE**  
BSB30115

**COURSE TYPE**  
T

**FREE TAFE**  
No

**DURATION**  
1 year

**CONTACT HOURS PER WEEK**  
Min. 3 hours per week workplace training

#### ENTRY REQUIREMENTS

You'll need to be employed as a trainee with a signed agreement.

#### CAREER OPPORTUNITIES

Administration assistant; Office assistant; General clerk; Receptionist

### CERTIFICATE IV IN ACCOUNTING AND BOOKKEEPING

#### LOCATION

Mt Helen (Ballarat), Wimmera (Horsham)

**NATIONAL COURSE CODE**  
FNS40217

**COURSE TYPE**  
S

**FREE TAFE**  
Yes

**DURATION**  
1 year

**CONTACT HOURS PER WEEK**  
2 evenings

#### ENTRY REQUIREMENTS

There are no formal entry requirements.

#### CAREER OPPORTUNITIES

Accounts administration; Accounts clerk; Accounts payable officer; Accounts receivable officer; Bookkeeper; Debtors clerk; Payroll officer  
BAS agent

### NEED MORE INFORMATION?

[Federation.edu.au/businessprograms](http://Federation.edu.au/businessprograms)

Before starting a TAFE course, you'll need to undertake a Language, literacy and numeracy assessment, Digital capability testing and a Pre-training review.

Find out more about fees at [federation.edu.au/fees](http://federation.edu.au/fees).

If you're an eligible student enrolled in an approved VET Student Loans course, you may defer all or part of your tuition fees to a VET Student Loan (up to the maximum loan cap).

## Professional Writing and Editing

### Make your mark

Take the first step towards a writing career which can take you around the world, or lets you work from home.

Writers are on the frontline of a revolution in information which demands an ability to communicate in print, on the web and in social media.

### CERTIFICATE IV IN PROFESSIONAL WRITING AND EDITING

#### LOCATION

SMB (Ballarat)

**NATIONAL COURSE CODE**  
CUA40118

**COURSE TYPE**  
S

**FREE TAFE**  
No

**DURATION**  
1 year

**CONTACT HOURS PER WEEK**  
3.5 days per week

#### ENTRY REQUIREMENTS

There are no formal entry requirements.

#### CAREER OPPORTUNITIES

Creative writer, Publishing assistant, Writer, Publicity assistant, Editing assistant/trainee, Design and production trainee, Proofreading assistant/trainee, Marketing and public relations assistant, Freelance writer, Journalist trainee

### NEED MORE INFORMATION?

[Federation.edu.au/pwe](http://Federation.edu.au/pwe)

# Graphic Design and Media

## Create your own path

Independent, creative, flexible and passionate – these are the qualities you'll need if you want to carve out a career in graphic design or digital media. And at Federation TAFE, you'll learn these in spades.

Our courses are equal parts creative and technical. You'll learn from experienced staff in a personalised environment and find out what it takes to either break in, or push ahead, in one of the fastest moving industries in the world.

### ADVANCED DIPLOMA OF GRAPHIC DESIGN

#### LOCATION

Camp St (Ballarat)

#### NATIONAL COURSE CODE

CUA60315

#### COURSE TYPE

S

#### FREE TAFE

No

#### DURATION

1 year

#### CONTACT HOURS PER WEEK

2 days

#### ENTRY REQUIREMENTS

Work/Industry experience or previous design study at diploma level.

#### CAREER OPPORTUNITIES

Graphic designer; Illustrator; Packaging designer; Web designer; App designer; Printer; Advertising designer

### DIPLOMA OF DIGITAL MEDIA TECHNOLOGIES

#### LOCATION

Mt Helen (Ballarat)

#### NATIONAL COURSE CODE

ICT50915

#### COURSE TYPE

S

#### FREE TAFE

No

#### DURATION

1 year

#### CONTACT HOURS PER WEEK

18 hours

#### ENTRY REQUIREMENTS

Interview and folio.

#### CAREER OPPORTUNITIES

Game designer and developer; 3D animator and modeller; Interactive designer and developer; 3D Modeller; C# programmer; Motion designer; 2D and 3D motion graphic artist; 2D animator

### DIPLOMA OF GRAPHIC DESIGN

#### LOCATION

Camp St (Ballarat)

#### NATIONAL COURSE CODE

CUA50715

#### COURSE TYPE

S

#### FREE TAFE

No

#### DURATION

1 year

#### CONTACT HOURS PER WEEK

24 hours

#### ENTRY REQUIREMENTS

Interview and folio.

#### CAREER OPPORTUNITIES

Graphic designer; Printer; Website designer; Illustrator; Advertiser; New media

### CERTIFICATE IV IN DIGITAL MEDIA TECHNOLOGIES

#### LOCATION

Mt Helen (Ballarat)

#### NATIONAL COURSE CODE

ICT40815

#### COURSE TYPE

S

#### FREE TAFE

No

#### DURATION

1 year

#### CONTACT HOURS PER WEEK

23 hours

#### ENTRY REQUIREMENTS

There are no formal entry requirements.

#### CAREER OPPORTUNITIES

2D and 3D motion graphic artist; C# programmer (low level); CMS web developer (joomla and wordpress); 3D animator; Web designer

### NEED MORE INFORMATION?

[Federation.edu.au/vis-arts](http://Federation.edu.au/vis-arts)

#### COURSE TYPE KEY

<b>S</b>	Study (may include Full Time, Part Time, On-campus, Flexible delivery, Workshops, Block mode and Blended delivery)	<b>P</b>	Pre-apprenticeship	<b>T</b>	Traineeship
		<b>A</b>	Apprenticeship	<b>SC</b>	Short Course

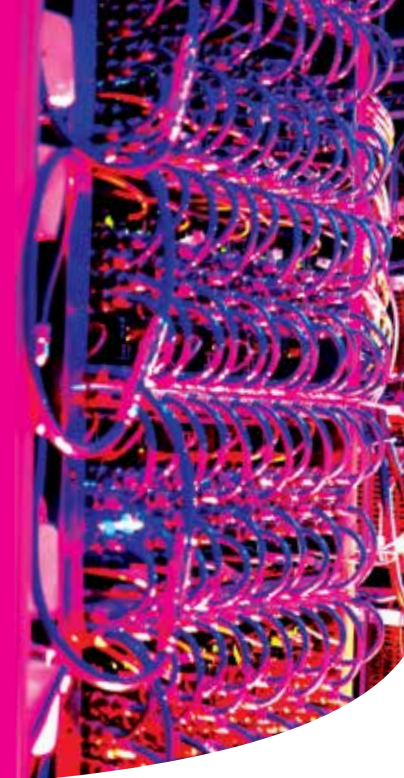


# Information Technology

## Drive change at the cutting-edge

With continuous advances in information technology, the opportunities to work in areas such as health, transport, finance, entertainment, media, science, energy, education and manufacturing are virtually limitless.

Thanks to our impressive breadth of content, an IT qualification from Federation TAFE will open up doors to all these sectors, giving you the skills, knowledge and confidence to make your mark in one of the most progressive industries in Australia.



### CERTIFICATE IV IN CYBER SECURITY

LOCATION	DURATION	CONTACT HOURS PER WEEK
Mt Helen (Ballarat)	36 weeks	3 days
NATIONAL COURSE CODE	COURSE TYPE	FREE TAFE
22334VIC	S	Yes

#### ENTRY REQUIREMENTS

There are no formal entry requirements.

#### CAREER OPPORTUNITIES

Computer helpdesk technician; Cyber security professional; Cyber security intrusions tester; Cyber security support officer; Information systems security support officer; Systems tester; PC support; Network security support officer; Network security trainee; Website security

### CERTIFICATE IV IN INFORMATION TECHNOLOGY

LOCATION	DURATION	CONTACT HOURS PER WEEK
Mt Helen (Ballarat)	1 year	18 hours
NATIONAL COURSE CODE	COURSE TYPE	FREE TAFE
ICT40115	S	No

#### ENTRY REQUIREMENTS

There are no formal entry requirements.

#### CAREER OPPORTUNITIES

Computer technician; Customer support professional; Network operations technician; PC support; Systems administrator; Systems operator; Systems support; Technical support; User support technician; Web design; Network administrator

### CERTIFICATE IV IN INFORMATION TECHNOLOGY SUPPORT

LOCATION	DURATION	CONTACT HOURS PER WEEK
Mt Helen (Ballarat)	2 years	Minimum 3 hours workplace training
NATIONAL COURSE CODE	COURSE TYPE	FREE TAFE
ICT40215	T	No

#### ENTRY REQUIREMENTS

You'll need to be employed as a trainee with a signed agreement.

#### CAREER OPPORTUNITIES

Computer technician; Network operations technician; Programmer; Systems support; Web development support; Customer support professional; Networking; Systems administrator; Technical support; Database developer; PC support; Systems operator; User support technician; Help desk officer; Help desk assistant; ICT operations support; ICT user support

### DIPLOMA OF INFORMATION TECHNOLOGY

LOCATION	DURATION	CONTACT HOURS PER WEEK
Mt Helen (Ballarat)	1 year	15 hours
NATIONAL COURSE CODE	COURSE TYPE	FREE TAFE
ICT50118	S	No

#### ENTRY REQUIREMENTS

There are no formal entry requirements. Prefer Certificate IV in IT or Cyber Security

#### CAREER OPPORTUNITIES

IT Office Manager; Web Developer

### NEED MORE INFORMATION?

[Federation.edu.au/it](http://Federation.edu.au/it)

Before starting a TAFE course, you'll need to undertake a Language, literacy and numeracy assessment, Digital capability testing and a Pre-training review.

Find out more about fees at [federation.edu.au/fees](http://federation.edu.au/fees).

If you're an eligible student enrolled in an approved VET Student Loans course, you may defer all or part of your tuition fees to a VET Student Loan (up to the maximum loan cap).

# Community and Children's Services

## Help others lead better lives

From community work, mental health and welfare, to drug rehabilitation, disability services and education support, this sector will connect you with some of the most vulnerable individuals and groups in our communities.

To help them thrive, we need caring, confident and skilled professionals to support them – those with the innate ability to connect with people from all walks of life, and to use their training and knowledge to get them where they need to be.

Our vast range of courses will give you the theoretical and practical skills to do just this – helping you prepare for the workplace or to take the pathway into further studies.

### DIPLOMA OF COMMUNITY SERVICES

#### LOCATION

Mt Helen (Ballarat); Wimmera (Horsham)

NATIONAL COURSE CODE	COURSE TYPE	FREE TAFE
CHC52015	S	Yes
DURATION	CONTACT HOURS PER WEEK	
2 years	2 days	

#### ENTRY REQUIREMENTS

There are no formal entry requirements

#### CAREER OPPORTUNITIES

Accommodation support worker; Assessor; Care and protection worker; Case manager; Client services assessor; Community services worker; Community welfare worker; Counsellor; Domestic violence worker; Early intervention coordinator; Family services worker; Family support worker; Group facilitator/coordinator; Health education officer; Local government officer; Outreach officer; Program coordinator; Residential worker; Senior youth officer; Social welfare worker; Support facilitator; Youth and child welfare worker; Youth worker; Advocate; Intake worker; Homelessness worker

### CERTIFICATE III IN COMMUNITY SERVICES

#### LOCATION

Mt Helen (Ballarat); Wimmera (Horsham)

NATIONAL COURSE CODE	COURSE TYPE	FREE TAFE
CHC32015	S	Yes
DURATION	CONTACT HOURS PER WEEK	
1 year	2 days	

#### ENTRY REQUIREMENTS

There are no formal entry requirements

#### CAREER OPPORTUNITIES

Community care worker; Welfare support worker; Youth worker; Residential support worker; Aboriginal intake and referral worker; Community care worker; Client contact; Aboriginal community development worker; Weekend recreational activities officer; Welfare support worker; Support worker (community services); Recreational activities officer; Neighbourhood centre worker; Youth worker; Juvenile justice officer; Youth housing support worker; Assistant community worker; Youth case worker; Youth support worker; Aboriginal youth worker; Accommodation support worker

### CERTIFICATE IV IN COMMUNITY SERVICES

LOCATION	DURATION	CONTACT HOURS PER WEEK
Mt Helen (Ballarat) Wimmera (Horsham)	1 year	2 days
NATIONAL COURSE CODE	COURSE TYPE	FREE TAFE
CHC42015	S	Yes

#### ENTRY REQUIREMENTS

There are no formal entry requirements

#### CAREER OPPORTUNITIES

Community support worker; Family support worker; Residential care worker; Welfare support worker

### CERTIFICATE IV IN CHILD, YOUTH AND FAMILY INTERVENTION

LOCATION	DURATION	CONTACT HOURS PER WEEK
Mt Helen (Ballarat)	11 months	2 days
NATIONAL COURSE CODE	COURSE TYPE	FREE TAFE
CHC40313	S	Yes

#### ENTRY REQUIREMENTS

There are no formal entry requirements

#### CAREER OPPORTUNITIES

Case support worker; Family support worker; Residential care worker; Child protection and support worker; Family support/protection worker; Child and youth support worker

#### COURSE TYPE KEY

<b>S</b>	Study (may include Full Time, Part Time, On-campus, Flexible delivery, Workshops, Block mode and Blended delivery)	<b>P</b>	Pre-apprenticeship	<b>T</b>	Traineeship
		<b>A</b>	Apprenticeship	<b>SC</b>	Short Course



#### CERTIFICATE IV IN DISABILITY

<b>LOCATION</b> Mt Helen (Ballarat)	<b>DURATION</b> 1 year	<b>CONTACT HOURS PER WEEK</b> 2 days
<b>NATIONAL COURSE CODE</b> CHC43115	<b>COURSE TYPE</b> S	<b>FREE TAFE</b> Yes

##### ENTRY REQUIREMENTS

There are no formal entry requirements

##### CAREER OPPORTUNITIES

Accommodation services worker; Adult day training centre worker; Advocacy services worker; Employment services worker; Peer support programs worker; Recreation services worker; Respite services worker; Planning officer

#### CERTIFICATE IV IN MENTAL HEALTH

<b>LOCATION</b> Mt Helen (Ballarat)	<b>DURATION</b> 1 year	<b>CONTACT HOURS PER WEEK</b> 2 days
<b>NATIONAL COURSE CODE</b> CHC43315	<b>COURSE TYPE</b> S	<b>FREE TAFE</b> Yes

##### ENTRY REQUIREMENTS

There are no formal entry requirements

##### CAREER OPPORTUNITIES

Community rehabilitation and support worker; Mental health rehabilitation support worker; Community support worker; Mental health outreach worker; Mental health support worker

#### DIPLOMA OF EARLY CHILDHOOD EDUCATION AND CARE

<b>LOCATION</b> Mt Helen (Ballarat) Wimmera (Horsham)	<b>DURATION</b> 2 years	<b>CONTACT HOURS PER WEEK</b> 2 days
<b>NATIONAL COURSE CODE</b> CHC50113	<b>COURSE TYPE</b> S	<b>FREE TAFE</b> Yes

##### ENTRY REQUIREMENTS

There are no formal entry requirements

##### CAREER OPPORTUNITIES

Early childhood educator; Room leader; Long day care educator; Out of school educator; Family day care educator

#### CERTIFICATE III IN EARLY CHILDHOOD EDUCATION AND CARE

<b>LOCATION</b> Mt Helen (Ballarat) Wimmera (Horsham)	<b>DURATION</b> 1 year	<b>CONTACT HOURS PER WEEK</b> 2 days
<b>NATIONAL COURSE CODE</b> CHC30113	<b>COURSE TYPE</b> S	<b>FREE TAFE</b> Yes

##### ENTRY REQUIREMENTS

There are no formal entry requirements

##### CAREER OPPORTUNITIES

Centre based care educator; Occasional care educator; Out of school hours educator; Pre-school centres co-educator; Family day care educator

#### NEED MORE INFORMATION?

[Federation.edu.au/earlychildhood](http://Federation.edu.au/earlychildhood)

Before starting a TAFE course, you'll need to undertake a Language, literacy and numeracy assessment, Digital capability testing and a Pre-training review.

Find out more about fees at [federation.edu.au/fees](http://federation.edu.au/fees).

If you're an eligible student enrolled in an approved VET Student Loans course, you may defer all or part of your tuition fees to a VET Student Loan (up to the maximum loan cap).



# Community and Children's Services (continued)

## CERTIFICATE III IN EDUCATION SUPPORT

<b>LOCATION</b> Mt Helen (Ballarat)	<b>DURATION</b> 11 months	<b>CONTACT HOURS PER WEEK</b> 2 days
<b>NATIONAL COURSE CODE</b> CHC30213	<b>COURSE TYPE</b> S	<b>FREE TAFE</b> Yes

### ENTRY REQUIREMENTS

There are no formal entry requirements

### CAREER OPPORTUNITIES

Teacher's aide; Integration aide; Learning support assistant; Teacher Assistant; School learning and support officer

## CERTIFICATE IV IN EDUCATION SUPPORT

<b>LOCATION</b> Mt Helen (Ballarat)	<b>DURATION</b> 11 months	<b>CONTACT HOURS PER WEEK</b> 2 days
<b>NATIONAL COURSE CODE</b> CHC40213	<b>COURSE TYPE</b> S	<b>FREE TAFE</b> Yes

### ENTRY REQUIREMENTS

There are no formal entry requirements

### CAREER OPPORTUNITIES

Teacher's aide; Learning support assistant; Teacher assistant; Integration aide; School learning and support officer

## CERTIFICATE IV IN TRAINING AND ASSESSMENT

<b>LOCATION</b> Mt Helen (Ballarat), SMB (Ballarat) Workplace	<b>DURATION</b> 37 weeks	<b>CONTACT HOURS PER WEEK</b> 2 days - 1 day on campus and 1 day directed learning
<b>NATIONAL COURSE CODE</b> TAE40116	<b>COURSE TYPE</b> S	<b>FREE TAFE</b> No

### ENTRY REQUIREMENTS

Work/Industry experience/training

## NEED MORE INFORMATION?

[Federation.edu.au/earlychildhood](https://www.federation.edu.au/earlychildhood)

Before starting a TAFE course, you'll need to undertake a Language, literacy and numeracy assessment, Digital capability testing and a Pre-training review.

Find out more about fees at [federation.edu.au/fees](https://www.federation.edu.au/fees).

If you're an eligible student enrolled in an approved VET Student Loans course, you may defer all or part of your tuition fees to a VET Student Loan (up to the maximum loan cap).



## Health

### Make a difference

At Federation TAFE, we're constantly engaged with the wider health sector, connecting with individuals, communities and providers from across the state.

We do this to make sure our TAFE courses in Nursing and Individual Support are industry-relevant – and that you can meet the demands of an evolving workforce, or confidently pursue further study.



## DIPLOMA OF NURSING

### LOCATION

Mt Helen (Ballarat); Wimmera (Horsham); Wimmera (Ararat); Workplace

NATIONAL COURSE CODE	COURSE TYPE	FREE TAFE
HLT54115	T or S	Yes
DURATION	CONTACT HOURS PER WEEK	
2 years	3 days	

### ENTRY REQUIREMENTS

An LLN score of minimum level 3 is required.  
See [federation.edu.au](http://federation.edu.au) for information

### CAREER OPPORTUNITIES

Aged care nurse; Community health nurse; Enrolled nurse;  
Mental health nurse; Nurse

## CERTIFICATE III IN INDIVIDUAL SUPPORT

### LOCATION

Mt Helen (Ballarat); Wimmera (Horsham)

NATIONAL COURSE CODE	COURSE TYPE	FREE TAFE
CHC33015	T or S	Yes
DURATION	CONTACT HOURS PER WEEK	
6 months	3 days	

### ENTRY REQUIREMENTS

There are no formal entry requirements.

### CAREER OPPORTUNITIES

Community support worker; Aged care worker; Disability care worker;  
Community care worker

## HEALTH SHORT COURSES

	NATIONAL COURSE CODE	LOCATION	DURATION	FREE TAFE
Course in Introduction to the National Disability Insurance Scheme	22469VIC	Ballarat (Mt Helen) Wimmera (Horsham)	1 day per week for 6 weeks	Yes
Health and Safety Representative Initial OHS training course	N/A	Ballarat, Horsham, Stawell	5 days	No
Health and Safety Representative Refresher OHS Training Course	N/A	Ballarat, Horsham, Stawell	1 day	No

## NEED MORE INFORMATION?

[Federation.edu.au/healthprograms](http://Federation.edu.au/healthprograms)

Before starting a TAFE course, you'll need to undertake a Language, literacy and numeracy assessment, Digital capability testing and a Pre-training review.

Find out more about fees at [federation.edu.au/fees](http://federation.edu.au/fees).

If you're an eligible student enrolled in an approved VET Student Loans course, you may defer all or part of your tuition fees to a VET Student Loan (up to the maximum loan cap).

### COURSE TYPE KEY

<b>S</b>	Study (may include Full Time, Part Time, On-campus, Flexible delivery, Workshops, Block mode and Blended delivery)	<b>P</b>	Pre-apprenticeship
		<b>A</b>	Apprenticeship
		<b>T</b>	Traineeship
		<b>SC</b>	Short Course

# Food

## Learn the recipe for greatness

Thinking about a career as a chef, baker, butcher, food technologist or hospitality worker? You couldn't have picked a better time.

The Accommodation and Food Services sector has grown over the past 20 years, with more than 260,000 jobs created. With advances in food processing and an ever-progressive hospitality scene (particularly here in Australia), there are plenty of opportunities to carve out a rewarding career in the industry.

### CERTIFICATE II IN FOOD PROCESSING

<b>LOCATION</b> Workplace	<b>DURATION</b> 18 months	<b>CONTACT HOURS PER WEEK</b> Average of 8 hours
<b>NATIONAL COURSE CODE</b> FBP20117	<b>COURSE TYPE</b> T	<b>FREE TAFE</b> No
<b>ENTRY REQUIREMENTS</b> There are no formal entry requirements for this program		<b>EXTRA REQUIREMENTS</b> You'll need to be employed as a trainee with a signed agreement
<b>CAREER OPPORTUNITIES</b> Food processing operator; Food and drink factory worker		

### CERTIFICATE III IN BAKING

<b>LOCATION</b> Workplace	<b>DURATION</b> 3 years	<b>CONTACT HOURS PER WEEK</b> Average of 8 hours
<b>NATIONAL COURSE CODE</b> FBP30517	<b>COURSE TYPE</b> A	<b>FREE TAFE</b> No
<b>ENTRY REQUIREMENTS</b> There are no formal entry requirements for this program		<b>EXTRA REQUIREMENTS</b> You'll need to be employed as a trainee with a signed agreement
<b>CAREER OPPORTUNITIES</b> Baker; Pastry cook		

### CERTIFICATE III IN BREAD BAKING

<b>LOCATION</b> Workplace	<b>DURATION</b> 3 years	<b>CONTACT HOURS PER WEEK</b> Average of 8 hours
<b>NATIONAL COURSE CODE</b> FBP30417	<b>COURSE TYPE</b> A	<b>FREE TAFE</b> No
<b>ENTRY REQUIREMENTS</b> There are no formal entry requirements for this program		<b>EXTRA REQUIREMENTS</b> You'll need to be employed as a trainee with a signed agreement
<b>CAREER OPPORTUNITIES</b> Bread baker; Retail Baker; Production Baker		

#### COURSE TYPE KEY

<b>S</b>	Study (may include Full Time, Part Time, On-campus, Flexible delivery, Workshops, Block mode and Blended delivery)	<b>P</b>	Pre-apprenticeship
		<b>A</b>	Apprenticeship
		<b>T</b>	Traineeship
		<b>SC</b>	Short Course

### CERTIFICATE III IN COMMERCIAL COOKERY

<b>LOCATION</b> SMB (Ballarat)	<b>DURATION</b> 18 months on-campus or 3 year apprenticeship	
<b>NATIONAL COURSE CODE</b> SIT30816	<b>COURSE TYPE</b> A or S	<b>FREE TAFE</b> Yes
<b>CONTACT HOURS PER WEEK</b> On-campus: 18 hours per week. Apprentices: average 6 hrs per fortnight		
<b>ENTRY REQUIREMENTS</b> There are no formal entry requirements for this program		<b>EXTRA REQUIREMENTS</b> You'll need to be employed as an apprentice with a signed agreement
<b>CAREER OPPORTUNITIES</b> Caterer; Chef; Cook; Sous chef		

### CERTIFICATE III IN FOOD PROCESSING

<b>LOCATION</b> Gillies Street (Ballarat)	<b>DURATION</b> 2 years	<b>CONTACT HOURS PER WEEK</b> Average of 8 hours
<b>NATIONAL COURSE CODE</b> FBP30117	<b>COURSE TYPE</b> T	<b>FREE TAFE</b> No
<b>ENTRY REQUIREMENTS</b> There are no formal entry requirements for this program		<b>EXTRA REQUIREMENTS</b> You'll need to be employed as a trainee with a signed agreement
<b>CAREER OPPORTUNITIES</b> Food processing operator; Food and drink factory worker; Team leader in food processing; Leading hand in food processing		

### CERTIFICATE III IN HOSPITALITY

<b>LOCATION</b> SMB (Ballarat)	<b>DURATION</b> 12 months	<b>CONTACT HOURS PER WEEK</b> Average of 2 x 5 hour
<b>NATIONAL COURSE CODE</b> SIT30616	<b>COURSE TYPE</b> S	<b>FREE TAFE</b> Yes
<b>ENTRY REQUIREMENTS</b> There are no formal entry requirements for this program		<b>EXTRA REQUIREMENTS</b> You'll need to be employed as a trainee with a signed agreement
<b>CAREER OPPORTUNITIES</b> Espresso coffee machine operator; Food and beverage attendant; Front desk receptionist; Front office assistant; Function attendant; Function host; Gaming attendant; Guest service agent; Housekeeper; Restaurant host; Senior bar attendant; Waiter		





### CERTIFICATE III IN HOSPITALITY (RESTAURANT FRONT OF HOUSE)

<b>LOCATION</b> SMB (Ballarat)	<b>DURATION</b> 2 years	<b>CONTACT HOURS PER WEEK</b> 1 day per fortnight
<b>NATIONAL COURSE CODE</b> SIT30716	<b>COURSE TYPE</b> A	<b>FREE TAFE</b> No
<b>ENTRY REQUIREMENTS</b> There are no formal entry requirements for this program		<b>EXTRA REQUIREMENTS</b> You'll need to be employed as a trainee with a signed agreement
<b>CAREER OPPORTUNITIES</b> Senior bar attendant; Sommelier; Waiter		

### CERTIFICATE III IN MEAT PROCESSING (RETAIL BUTCHER)

<b>LOCATION</b> Workplace	<b>DURATION</b> 4 years	<b>CONTACT HOURS PER WEEK</b> Average of 8 hours
<b>NATIONAL COURSE CODE</b> AMP30815	<b>COURSE TYPE</b> A	<b>FREE TAFE</b> No
<b>ENTRY REQUIREMENTS</b> There are no formal entry requirements for this program		<b>EXTRA REQUIREMENTS</b> You'll need to be employed as a trainee with a signed agreement
<b>CAREER OPPORTUNITIES</b> Butcher		

### CERTIFICATE III IN PATISSERIE

<b>LOCATION</b> SMB (Ballarat)	<b>DURATION</b> 1 year	<b>CONTACT HOURS PER WEEK</b> Average 15 hours
<b>NATIONAL COURSE CODE</b> SIT31016	<b>COURSE TYPE</b> S	<b>FREE TAFE</b> No
<b>ENTRY REQUIREMENTS</b> There are no formal entry requirements for this program		
<b>CAREER OPPORTUNITIES</b> Dessert chef; Pastry cook; Patisserie chef		

### CERTIFICATE IV IN FOOD SCIENCE AND TECHNOLOGY

<b>LOCATION</b> Mt Helen (Ballarat)		
<b>NATIONAL COURSE CODE</b> FDF40311	<b>COURSE TYPE</b> T or S	<b>FREE TAFE</b> No
<b>DURATION</b> 18 months online or 2 year traineeship	<b>CONTACT HOURS PER WEEK</b> 1.5 week block (on campus training)	
<b>ENTRY REQUIREMENTS</b> There are no formal entry requirements for this program		<b>EXTRA REQUIREMENTS</b> Work/life experience and education background
<b>CAREER OPPORTUNITIES</b> Food technologist		

### DIPLOMA OF HOSPITALITY MANAGEMENT

<b>LOCATION</b> SMB (Ballarat)		
<b>NATIONAL COURSE CODE</b> SIT50416	<b>COURSE TYPE</b> S	<b>FREE TAFE</b> No
<b>DURATION</b> 16 months	<b>CONTACT HOURS PER WEEK</b> 3 hours online per week Plus 1 day on campus per month	
<b>ENTRY REQUIREMENTS</b> There are no formal entry requirements for this program		<b>EXTRA REQUIREMENTS</b> You'll normally be required to be employed within the hospitality industry need to be employed as a trainee with a signed agreement

**NEED MORE INFORMATION?**  
Federation.edu.au/food

Before starting a TAFE course, you'll need to undertake a Language, literacy and numeracy assessment, Digital capability testing and a Pre-training review.

Find out more about fees at [federation.edu.au/fees](https://www.federation.edu.au/fees).

If you're an eligible student enrolled in an approved VET Student Loans course, you may defer all or part of your tuition fees to a VET Student Loan (up to the maximum loan cap).

# Hairdressing and Beauty

## Take your skills around the world

A career in the hairdressing and beauty industry is almost limitless, both in what you can do and where you can go.

On one hand, it's a rewarding career choice. You'll be working with people from all kinds of backgrounds – helping them express themselves in unique ways. You can even take on specialist roles assisting people with disability or illness, to boost their self-image and confidence.

On the other hand, it's an exciting and progressive industry to be part of. You'll learn cutting-edge techniques that will give you the skills to work in a range of workplaces, from film sets and cruise ships, to high-end salons in the world's greatest cities.

BEAUTY SHORT COURSES	NATIONAL COURSE CODE	LOCATION	DURATION	FREE TAFE
Apply Cosmetic Tanning Products	SHB30115	SMB (Ballarat)	3 evenings (Ballarat)	No
Apply Eyelash Extensions	SHB30115	SMB (Ballarat)	4 evenings (Ballarat)	No

DIPLOMA OF BEAUTY THERAPY		
LOCATION SMB (Ballarat)	DURATION 18 months	CONTACT HOURS PER WEEK 3 days
NATIONAL COURSE CODE SHB50115	COURSE TYPE S	FREE TAFE No
ENTRY REQUIREMENTS There are no formal entry requirements for this program		
CAREER OPPORTUNITIES Beauty therapist; Nail technician; Salon manager; Salon owner; Beautician		

CERTIFICATE III IN BEAUTY SERVICES		
LOCATION SMB (Ballarat)	DURATION 6 months	CONTACT HOURS PER WEEK 3 days
NATIONAL COURSE CODE SHB30115	COURSE TYPE S	FREE TAFE No
ENTRY REQUIREMENTS There are no formal entry requirements for this program		
CAREER OPPORTUNITIES Beauty advisor; Lash technician; Make-up artist; Spray tan technician Beauty sales and reception; Sales representative; Beautician		

CERTIFICATE II IN SALON ASSISTANT		
LOCATION SMB (Ballarat)	DURATION 5 months	CONTACT HOURS PER WEEK 3 days
NATIONAL COURSE CODE SHB20216	COURSE TYPE P	FREE TAFE Yes
ENTRY REQUIREMENTS There are no formal entry requirements for this program.		
CAREER OPPORTUNITIES Apprentice hairdresser; Salon assistant		

### NEED MORE INFORMATION?

[Federation.edu.au/hairandbeauty](http://Federation.edu.au/hairandbeauty)

CERTIFICATE III IN HAIRDRESSING		
LOCATION SMB (Ballarat)		
NATIONAL COURSE CODE SHB30416	COURSE TYPE A or S	FREE TAFE No
DURATION 18 months on-campus or 3 year apprenticeship	CONTACT HOURS PER WEEK 21 hours per week or according to apprentice training plan	
ENTRY REQUIREMENTS There are no formal entry requirement for non-apprenticeship students. Apprenticeship students will need to be employed with a signed agreement.		
CAREER OPPORTUNITIES Colourist; Hairdresser; Stylist		

Before starting a TAFE course, you'll need to undertake a Language, literacy and numeracy assessment, Digital capability testing and a Pre-training review.

Find out more about fees at [federation.edu.au/fees](http://federation.edu.au/fees).

If you're an eligible student enrolled in an approved VET Student Loans course, you may defer all or part of your tuition fees to a VET Student Loan (up to the maximum loan cap).

COURSE TYPE KEY	
<b>S</b>	Study (may include Full Time, Part Time, On-campus, Flexible delivery, Workshops, Block mode and Blended delivery)
<b>P</b>	Pre-apprenticeship
<b>A</b>	Apprenticeship
<b>T</b>	Traineeship
<b>SC</b>	Short Course



#### DISCLAIMER

Information contained in this brochure was correct at the time of printing (August 2020). Federation University Australia reserves the right to alter any course, procedure or fee, as deemed necessary. Prospective students should confirm course information by visiting [federation.edu.au](http://federation.edu.au) and [vtac.edu.au](http://vtac.edu.au) or by contacting the University directly. The information in this brochure is specifically for domestic students – international students should contact International Education on +61 3 5327 9018. Produced by Federation University Australia, Marketing and Communications. Federation University Australia programs are delivered with Victorian and Commonwealth government funding to eligible individuals. CRICOS Provider No. 00103D. National RTO Code: 4909





Federation.edu.au

1800 333 864 (1800 FED UNI)

#feduni      /feduniaustralia

# Feed